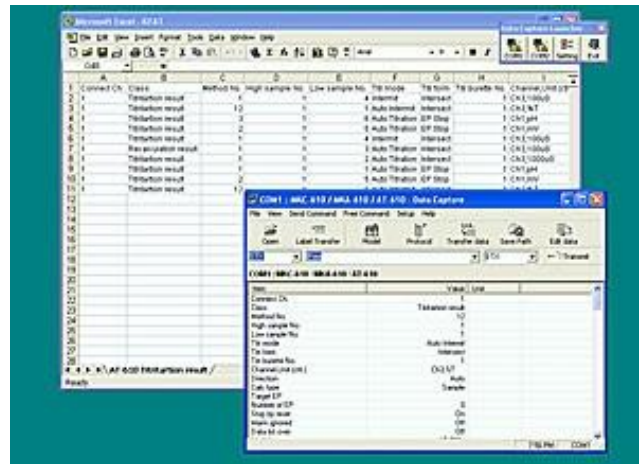


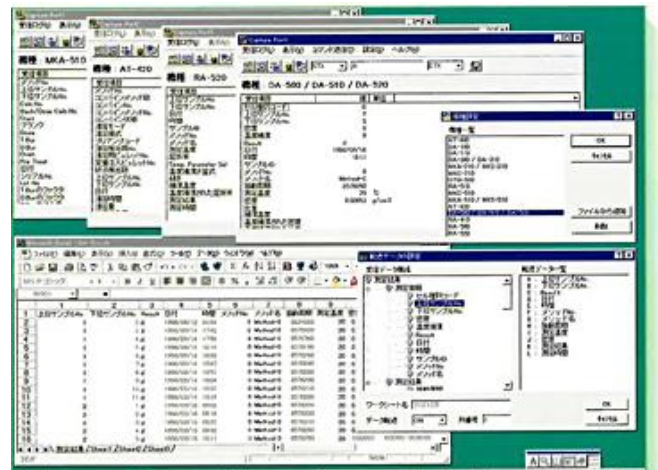
## Data Acquisition Software | SOFT-CAP

The Data Capture software compatible with Windows 2000 / XP / Vista / 7 English version (32-bit version only) can connect your personal computer with various KEM analytical instruments via RS-232C port so that measurement results can be downloaded directly to Microsoft® Excel workbook or stored in CSV file format. Maximum four KEM instruments can be connected and controlled by this software, and the output data from each unit can be edited in the user's desired format and saved in the file.



### Features:

1. Measurement results from maximum four KEM instruments can be exported to Excel workbooks (compatible with Excel 97/2000/2002/2003/2007/2010).
2. The output data can also be filed in CSV format so that the data is made best use of in the user's Excel spreadsheet.



**Specification:**

|                        |  |
|------------------------|--|
| Control command        | “Data Capture” software in 1× CD-ROM   |
| Function               | <ol style="list-style-type: none"> <li>1) Export direct to Microsoft<sup>®</sup> Excel</li> <li>2) Store in CSV format</li> <li>3) Display on user's computer screen</li> </ol>  |
| Control command        | see the chart of Model and Control commands  |
| Signal interface       | <p>RS232C synchronized signal method</p> <p>Signal code: ASCII</p> <p>Baud rate: 300/600/1200/2400/4800/9600/14400/19200</p> <p>Start bit: 1 bit(fixed)</p> <p>Data length: 7/8 bit</p> <p>Stop bit: 1/1.5/2 bit</p> <p>Parity: even, odd, no parity</p>   |
| Flow control           | Not available  |
| Procedure              | Sequence of transmittal not limited  |
| Connectable instrument | <p>DA-640, DA-645, DA-650, DA-520, DA-510, DA-505, DA-500, DA-310, DA-300, DA-100, DA-110, MKA-210, MKS-210, MKA-510, MKS-510, MKC-210, MKC-510, MKC-510N, MKC-520, MKC-500, MKC-501, MKS-500, MKA-510N, MKS-510N, MKA-520, MKS-520,</p> <p>AT-510, AT-400, AT-420, RA-600, RA-620, AT-500N, AT-500,</p> <p>RA-520, RA-520N, RA-500, RA-500N, RA-410, RA-510, QTM-500, MKH-700MKA-610, MKC-610, AT-610, AT-700, ASDA-5000, DA+RA (600) Combination, D155</p> |

## Applications:

Data Capture software not only displays and transfers data of measurement results to Excel workbook or saves in CSV format for edit and file, but controls the connected unit or units for the following functions of each model:

| Model                                | Control commands by Data Capture from User's computer  |
|--------------------------------------|--|
| DA-640<br>DA-645<br>DA-650           | <ol style="list-style-type: none"> <li>1) Start density measurement</li> <li>2) Start calibration</li> <li>3) Start check measurement</li> <li>4) Reset measurement</li> <li>5) Start multiple sample changer</li> <li>6) Move to measurement screen</li> </ol>                                    |
| DA-500<br>DA-505<br>DA-510<br>DA-520 | <ol style="list-style-type: none"> <li>1) Start density measurement</li> <li>2) Start calibration measurement</li> <li>3) Start check measurement</li> <li>4) Reset measurement</li> <li>5) Start multiple sample changer</li> </ol>   |
| DA-300<br>DA-310                     | <ol style="list-style-type: none"> <li>1) Start density measurement</li> <li>2) Start factor measurement</li> <li>3) Start check measurement</li> <li>4) Reset measurement</li> <li>5) Reset statistics</li> <li>6) Skip measurement sequence</li> <li>7) Start multiple sample changer</li> </ol> |
| DA-100                               | <ol style="list-style-type: none"> <li>1) Start density measurement</li> <li>2) Reset measurement</li> </ol>   |
| DA-110                               | No control command   |
| MKA-210<br>MKS-210                   | <ol style="list-style-type: none"> <li>1) Start moisture measurement</li> <li>2) Start pre-titration</li> </ol>  |

|  |   |
|--|---|
|  | <ul style="list-style-type: none"> <li>3) Reset blank titration</li> <li>4) Reset measurement</li> </ul>  |
| <p>MKA-520<br/>MKS-520<br/>MKA-510N<br/>MKS-510N<br/>MKA-510<br/>MKS-510<br/>MKS-500</p> | <ul style="list-style-type: none"> <li>1) Start moisture measurement</li> <li>2) Start pre-titration</li> <li>3) Reset titration</li> <li>4) Reset statistics</li> </ul>  |
| MKC-210  | <ul style="list-style-type: none"> <li>1) Start moisture measurement</li> <li>2) Start pre-titration</li> <li>3) Reset titration</li> <li>4) Reset measurement</li> <li>5) Reset statistics</li> </ul>                                    |
| <p>MKC-520<br/>MKC-510N<br/>MKC-510<br/>MKC-501<br/>MKC-500</p>                          | <ul style="list-style-type: none"> <li>1) Start moisture measurement</li> <li>2) Start pre-titration</li> <li>3) Reset titration</li> <li>4) Reset statistics (for MKC-520, MKC-510N, MKC-510 only)</li> </ul>                            |
| AT-510   | <ul style="list-style-type: none"> <li>1) Start titration</li> <li>2) Reset titration</li> <li>3) Pause titration</li> <li>4) Cancel pause</li> <li>5) Start multiple sample changer</li> <li>6) Reset multiple sample changer</li> </ul> |
| AT-700   | <ul style="list-style-type: none"> <li>1) Start titration</li> <li>2) Reset titration</li> <li>3) Start multiple sample changer</li> </ul>  |
| <p>AT-420<br/>AT-400<br/>AT-500N</p>   | <ul style="list-style-type: none"> <li>1) Start titration</li> <li>2) Reset titration</li> <li>3) Pause titration</li> </ul>  |

|  |   |
|--|---|
| AT-500                                 | <ol style="list-style-type: none"> <li>4) Cancel pause</li> <li>5) Start multiple sample changer</li> </ol>   |
| RA-600<br>RA-620                       | <ol style="list-style-type: none"> <li>1) Start density measurement</li> <li>2) Reset measurement</li> <li>3) Move to measurement screen</li> </ol>   |
| RA-520<br>RA-500<br>RA-520N<br>RA-500N | <ol style="list-style-type: none"> <li>1) Start measurement</li> <li>2) Start calibration</li> <li>3) Start check measurement</li> <li>4) Reset measurement</li> <li>5) Start multiple changer</li> </ol>                                     |
| RA-410                                 | <ol style="list-style-type: none"> <li>1) Start measurement</li> <li>2) Start calibration</li> <li>3) Start check measurement</li> <li>4) Reset measurement</li> </ol>  |
| RA-510                                 | <ol style="list-style-type: none"> <li>1) Start measurement</li> <li>2) Start zero calibration</li> <li>3) Reset measurement</li> <li>4) Reset statistics</li> <li>5) Skip measurement sequence</li> <li>6) Start multiple changer</li> </ol> |
| QTM-500                                | <ol style="list-style-type: none"> <li>1) Start measurement</li> <li>2) Reset measurement</li> <li>3) Reset statistics</li> </ol>   |
| MKA-610<br>MKC-610<br>AT-610           | No control command  |
| ASDA-5000                              | No control command  |
| APD-600A                               | No control command  |
| DA+RA (600) Combination                | <ol style="list-style-type: none"> <li>1) Start density measurement</li> </ol>  |

|      |   |
|------|---|
|      | 2) Start calibration<br>3) Start check measurement<br>4) Reset measurement<br>5) Start multiple sample changer<br>6) Move to measurement screen |
| D155 | No control command  |

### Recommended system

|                   |  |
|-------------------|--|
| Personal computer | Windows 2000 / XP / Vista (Home Basic , Business) / 7 (Home Premium, Professional) with more than Pentium II 233MHz and Excel 97 / 2000 / 2002 / 2003 /2007/2010 (32-bit version only) |
| Memory            | More than 128MB (512MB recommended)  |
| Hard disk         | Space more than 10MB   |
| Display           | More than 640 by 480   |
| Drive             | CD-ROM   |
| Serial port       | Serial port or USB Serial Transducer required per each instrument  |